

COLLEGE OF THE SEQUOIAS COMMUNITY COLLEGE DISTRICT
Board of Trustees Meeting
November 14, 2022

**FARMING OPERATIONS ANNUAL UPDATE –
TULARE COLLEGE CENTER**

3

Status: **Information**

Presented by: C. Louann Waldner
Provost, Tulare College Center

Issue

The Tulare College Center Provost Office works in concert with the Farming Operations Committee (community advisory committee) and Instructional Faculty in operating the 320-acre farm located around the Tulare College Center. The Provost provides an annual report to the Board to update on the farming operations.

Background

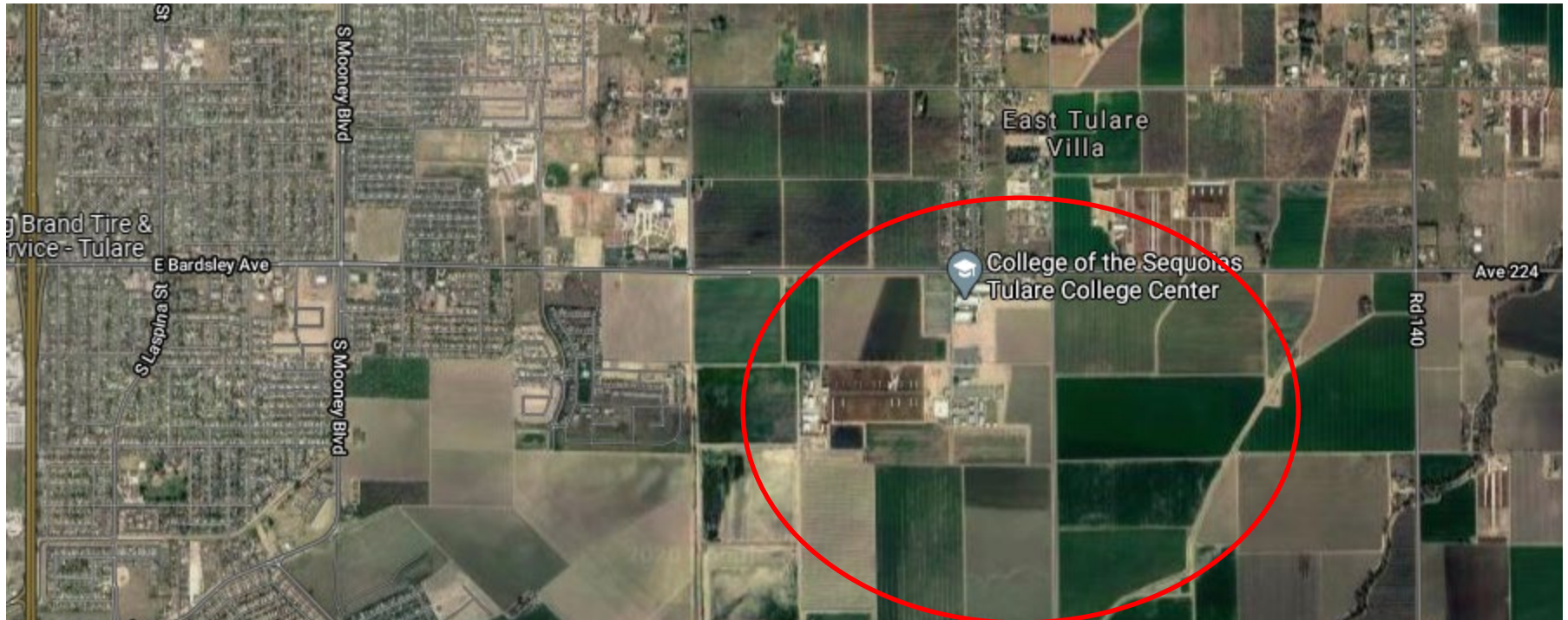
The Tulare College Center manages the farming portion of the TCC campus to aid the COS District in providing the financial and educational resources to support the agriculture instructional programs for the College. The Farming Operations Committee meets monthly to assist the Provost in analyzing the different cropping patterns and making decisions related to contracts, water, irrigation, harvesting, maintenance, regulatory requirements and related farm activities. The goal is to not only meet the financial needs of the units but also provide the opportunity for the instructional program such as Ag/Irrigation Technology, Plant Science and Ag Management to use the farm for their classes and laboratories.

Recommended Action

The attached report is for informational purposes.

Farming Operations Update

COS Board Meeting
November 2022



- Goals of the Farming Operations Committee
 - Maximize revenue and net profit on the 320 acre farming operation.
 - Reduce water usage by efficiently managing both surface and groundwater resources.
 - Provide a cropping pattern that enhances the agriculture instructional program.
 - Provide ample opportunities for demonstration, practice and implementation of Ag & Irrigation Technology for classes and using the Technology as a tool in management decisions.

2022 CROP YEAR PLANS

COS Tulare Site Crop Rotation Plan-2022 Crop Year Updated 10/15/21																
Field #	FSA Acreage	Acreage		Crop	2022											
					Jan	Feb	March	April	May	June	July	Aug	Sept	Oct	Nov	Dec
1	36	36	Single	Corn Silage												Prep
2	13	14	Single	Corn Silage												Prep
3&4	43	44	Double	Silage (Wheat & Corn)												Prep
5	13	14	Double	Silage (Wheat & Corn)												Prep
6	16	17	Single	Corn Silage												Prep
7	70	70		Alfalfa												
8	70	70	Double	Silage (Wheat & Corn)												Prep
9	50	50		Almonds												
10	5	5		Instructional Crops	Student Ag Experimental Farm (SAgE Farm) --Plant Vines Spring 2020											

SAgE (Student Agriculture Experimental) Farm

Citrus – planted in 2020

Vines – plant in Spring 2021

2022 Crop Year: Plans

4999 E Bardsley Av

Field # 1
36 Acres
Corn

Field # 2
13 Acres
Corn

Field # 3
40 Acres
Corn/Wheat

Field # 4

Field # 5
13 Acres
Corn/
Wheat

Field # 6
16 Acres
Corn

Field # 10-

Pasture

Field # 9
50 Acres
Almonds

Field # 8
70 Acres
Corn/Wheat

Field # 7
72 Acres
Alfalfa

#1
#13

City

Phase II

Solar

#12

#3

#6

#5

#7

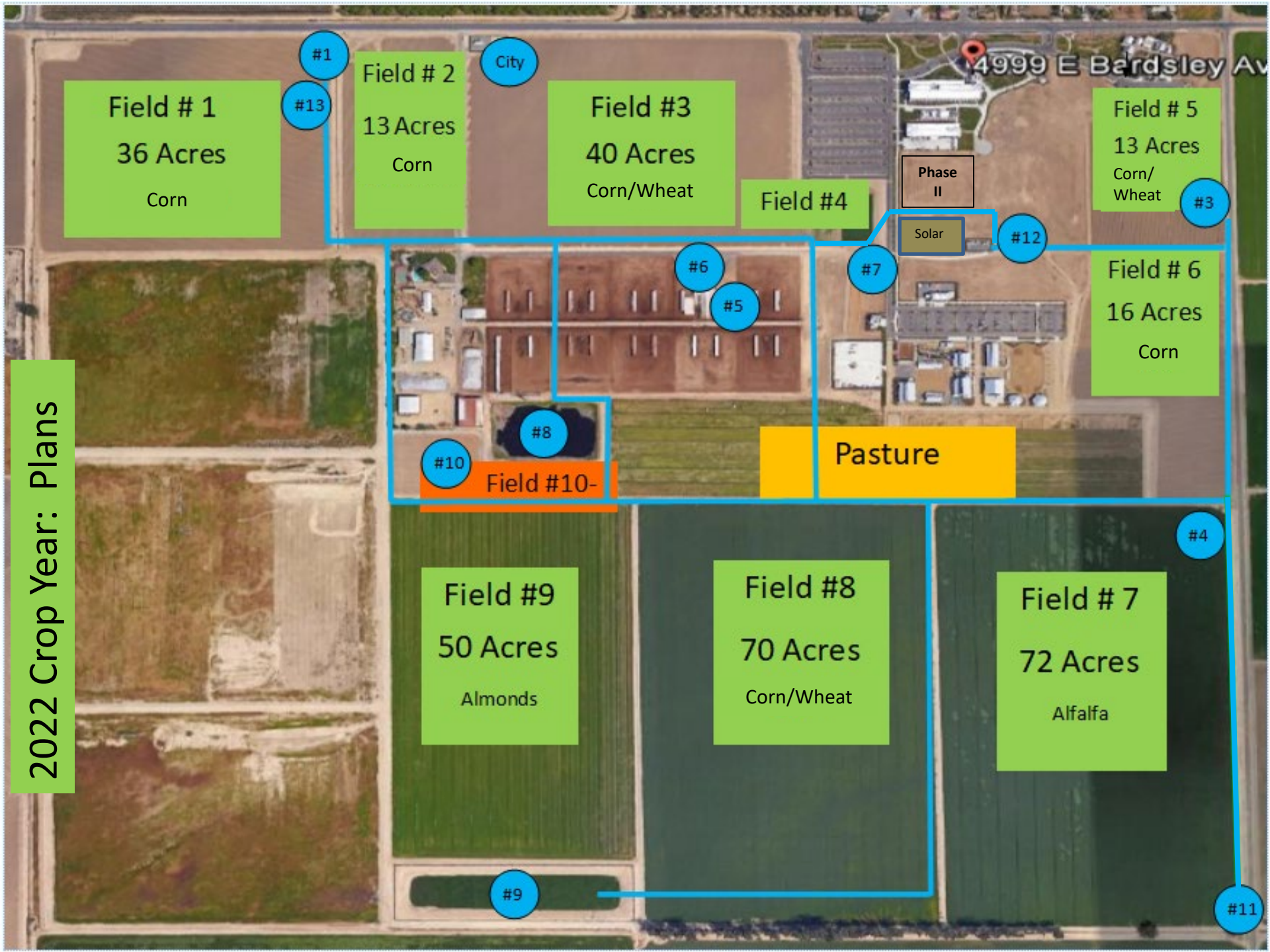
#8

#10

#4

#9

#11



Crop Year 2022: Corn Silage Yields						
Field	Harvest Date	Dry Matter	Acres	Total Tons	Total Revenue	Yield/AC
1	7/15-16/2022	38.43	36	1176.2	\$ 169,524.15	32.7
2	7/15/2022	33.67	20	417.0	\$ 52,647.51	20.9
6	7/15/2022	35.10	14	448.3	\$ 59,008.80	32.0
			70	2,041.6	\$ 281,180.46	29.1 (AVG Yield/Acre for Fields 1, 2 & 6; 70 acres)
3	9/29/2022	32.8	44	1,015.9	\$ 116,825.05	23.1
5	9/22-23/2022	29.7	14	355.0	\$ 37,884.88	25.4
8	9/22,23,29	34.70	70	1,609.1	\$ 188,863.59	23.0 (AVG Yield/Acre for Fields 3,5 & 8; 195 acres)
			195	2980		23.8
TOTALS					\$ 624,753.98	



Corn Silage	
Expenses	\$362,705.86
Revenue	\$624,753.98
Profit/Loss	\$262,048.12

Wheat Silage	
Expenses	\$66,946.47
Revenue	\$220,706.49
Profit/Loss	\$153,760.02

Alfalfa

- 70 acres
- Year 3
- 8 cuttings
(last cutting not included)

2022:
Expenses: \$ 54,523.83
Revenue: \$320,508.80
Profit/Loss: \$265,984.97

2021 (Year 2): **2020 (Year 1):**
Expenses: \$ 60,986.45 **\$ 93,281.63**
Revenue: \$ 215,805.49 **\$ 124,120.50**
Profit/Loss: \$ 154,819.04 **\$ 31,838.87**

Alfalfa (Field 7-71 Acres) Crop Year 2022-Yields & Revenue

Planted: February 4, 2020 Variety: Americas 801										
Date	Acres	Bales	Tons	Tons/Acre	Crude Protein (DM%)	CA TDN (90% DM)	Comments	COS Price (per ton)	Revenue	Note:
4/8/2022	70	1789	133.09	1.90	20.28	55.45	1st cutting-small bales	\$ 385.00	\$ 51,239.65	Henry Garcia Dairy
5/11/2022	70		132.43	1.89	21.75	54.67	2nd cutting-large bales	\$ 420.00	\$ 55,620.60	Henry Garcia Dairy
6/11/2022	70	261	118.01	1.69	20.45	53.19	3rd cutting-large bales	\$ 420.00	\$ 49,564.20	Henry Garcia Dairy
7/8/2022	70		125.89	1.80			4th cutting-large bales	\$ 415.00	\$ 52,244.35	Henry Garcia Dairy
7/29/2022*	70	1478	102.96	1.47	20.36	54.94	5th cutting-small bales	\$ 380.00	\$ 38,760.00	Animal Science
9/1/2022	70	243	99.52	1.42	20.13	53.09	6th cutting-large bales	\$ 400.00	\$ 39,808.00	Triple H Dairy
10/8/2022	70	189	83.18	1.19			7th cutting-large bales	\$ 400.00	\$ 33,272.00	Triple H Dairy
									\$ 320,508.80	

ALMOND TREES

Almond Expenses/Revenue

	Year	Expenses	Revenue	Profit
Year 1	2017	\$ 412,422		
Year 2	2018	\$ 124,242		
Year 3	2019	\$ 174,170	\$ 216,804	\$ 42,634
Year 4	2020	\$ 174,983	\$ 169,369	(\$ 5,614)
Year 5	2021	\$ 192,119	\$ 276,082	\$ 83,962
Year 6	2022	\$138,421		

Challenges & Bright Spots

- Higher production costs
- Almond prices will remain suppressed as handles work through the carry forward and buyers leverage the over-supply scenario.
- Water supply & management (SGMA-Sustainable Groundwater Management Act)



- Higher commodity prices (as a farmer positive; negative for dairies)
- Technology investments @ COS Farm for water management.

Future Goals and Projects

1. Power Monitoring
2. Water Level Monitoring
3. Automation
4. Flow Monitoring



Bright Spots-Water Mngmt

Farm Operations/Ag Instructional Units



Charlie Abee, Ag Technology/Ag Irrigation

- [Kaweah Water Dashboard](#)
- [HotSpot Ag](#)





Farm Operations/Ag Instructional Units

Questions?